

AVAILABLE



MIDTOWN

562 KING STREET | CHARLESTON, SC 29403

MOVE-IN READY STREET FRONT RETAIL

- ◆ 1,897 SF prime street-level retail space available; part of Upper King's newest development, Midtown (37,000 SF development)
- ◆ Development boasts 398 space public parking deck; rare for downtown Charleston
- ◆ Deemed as the "Dine & Design District" with year-round events, large student population and quickly growing mixed-use, multifamily & hotel market with over 1,200 beds within two blocks of the store front
- ◆ Space features many tenant improvements & FF&E available-call for details!

JOIN THESE RETAILERS:



TRAFFIC COUNTS:



12,800
King St.

Source: Esri 2018

CONTACT:

ELYSE WELCH, CCIM
843 203 1111

EWelch@Lee-Associates.com

JOHN ORR, CCIM
843 793 6974

JOrr@Lee-Associates.com

LINDSEY HALTER
843 277 4322

LHalter@Lee-Associates.com



AREA STATS:

22,000 students w/in 1.5 mile radius | **\$205** spending per visitor per day

4.8 million visitors per year

54,319 total employees



*Map not drawn to scale. Select tenants shown.

THE DEMOS:

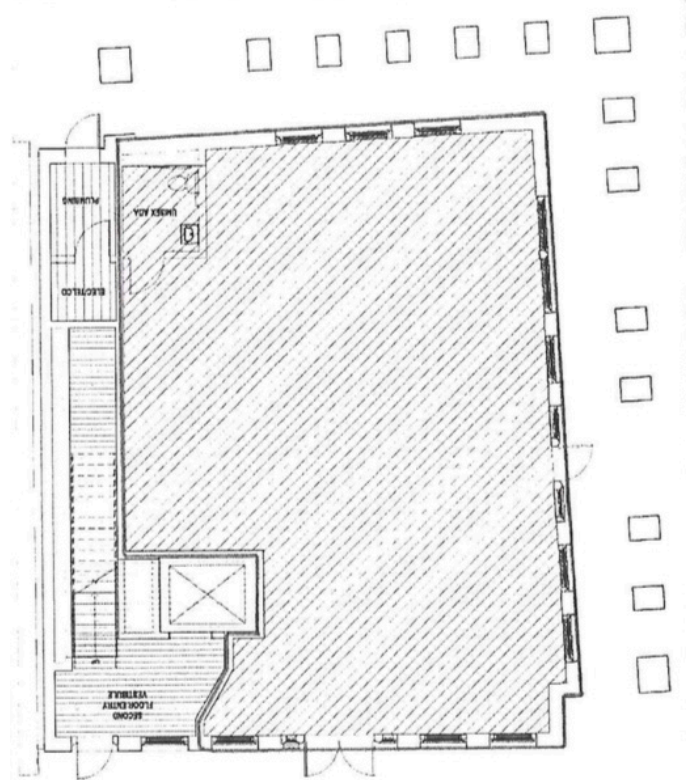
10 Minutes

	46,999 Estimated 2018 Population
	52,563 Estimated 2023 Population
	\$71,311 Average Household Income
	28.8 Median Age

15 Minutes

	135,987 Estimated 2018 Population
	147,556 Estimated 2023 Population
	\$77,038 Average Household Income
	35.8 Median Age

Source: Esri 2018



KING STREET

CONTACT:

ELYSE WELCH, CCIM
843 203 1111

EWelch@Lee-Associates.com

JOHN ORR, CCIM
843 793 6974

JOrr@Lee-Associates.com

LINDSEY HALTER
843 277 4322

LHalter@Lee-Associates.com

LEE & ASSOCIATES
COMMERCIAL REAL ESTATE SERVICES

CRE
CAROLINA RETAIL EXPERTS

We obtained the information above from sources we believe to be reliable. However, we have not verified its accuracy and make no guarantee, warranty or representation about it. It is submitted subject to the possibility of errors, omissions, change of price, rental or other conditions, prior sale, lease or financing, or withdrawal without notice. We include projections, opinions, assumptions or estimates for example only, and they may not represent current or future performance of the property. You and your tax and legal advisors should conduct your own investigation of the property and transaction.